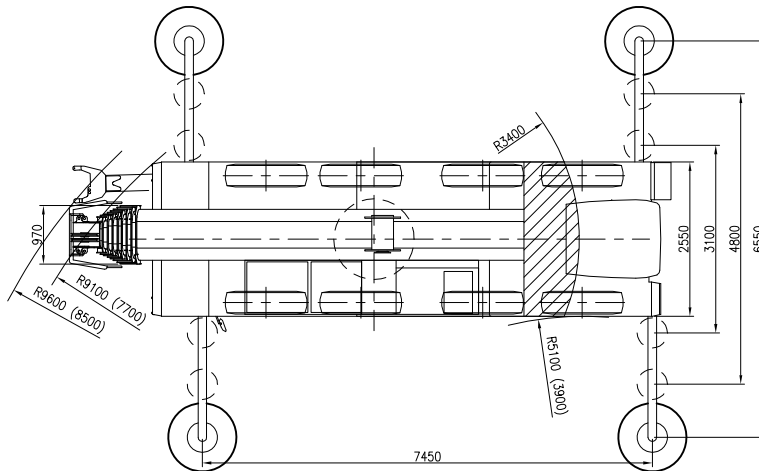
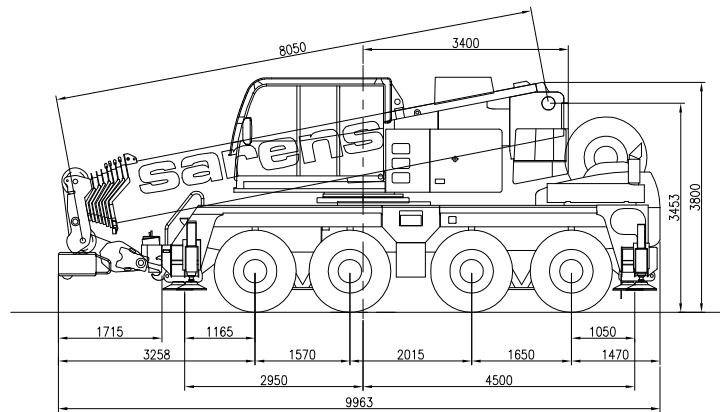
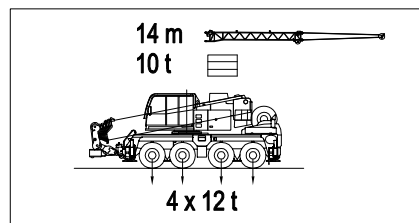


TEREX AC 60

60 TON



(): With Independent rear axle steering / Avec direction indépendante des essieux AR / Mit unabhängiger Hinterachslenkung / met onafhankelijke achter as sturing



nothing too heavy, nothing too high



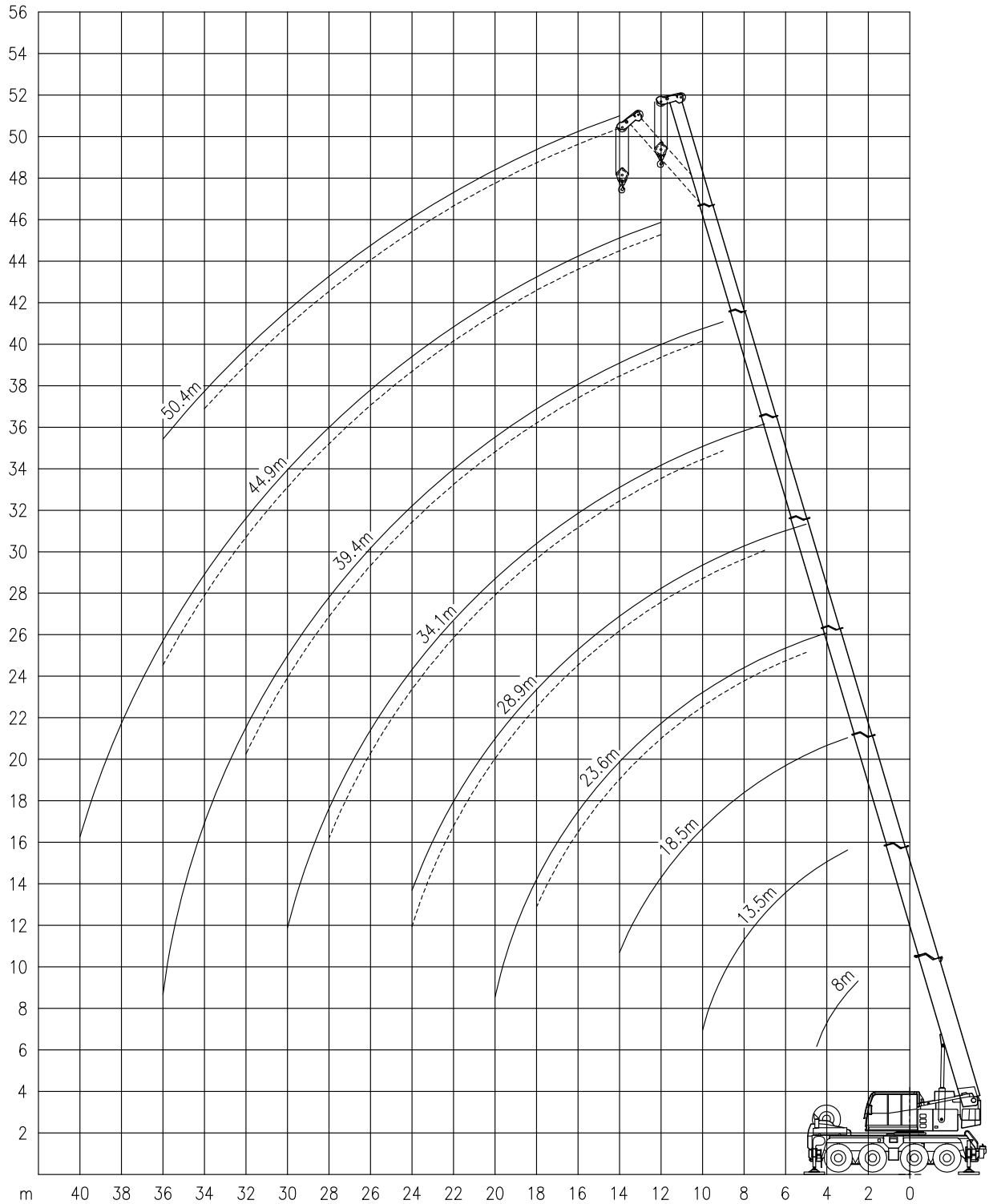
TEREX AC 60

60 TON

Working ranges
Portées

Arbeitsbereiche
Werkbereich

Ha

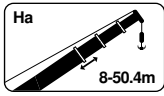


TEREX AC 60

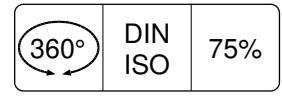
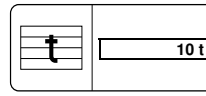
60 TON

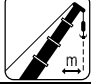
Lifting capacities
Capacités

Tragfähigkeiten
Capaciteiten



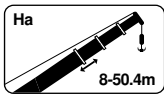
Ha



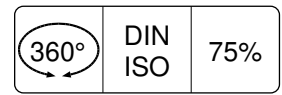
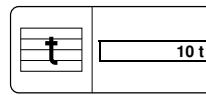
	8.0 m	13.4 m	18.5 m	23.6 m	28.9 m	34.1 m	39.4 m	44.9 m	50.4 m
									
m	t	t	t	t	t	t	t	t	t
2.5	70.0 !**	-	-	-	-	-	-	-	-
3.0	60.0 !*	-	-	-	-	-	-	-	-
3.0	54.8	50.6	47.1	-	-	-	-	-	-
3.5	50.0	47.1	43.9	-	-	-	-	-	-
4.0	45.8	44.1	40.7	31.7	-	-	-	-	-
4.5	42.0	41.2	38.2	29.9	-	-	-	-	-
5.0	-	37.6	35.6	28.2	25.7	-	-	-	-
6.0	-	31.3	30.8	25.3	23.5	-	-	-	-
7.0	-	26.0	25.4	23.0	21.6	17.7	-	-	-
8.0	-	22.5	21.5	21.1	19.9	16.4	-	-	-
9.0	-	18.6	19.0	18.1	17.3	15.2	12.3	-	-
10.0	-	15.5	15.9	15.2	15.0	13.7	11.5	-	-
12.0	-	-	12.3	12.2	12.2	10.6	10.1	8.7	-
14.0	-	-	9.6	9.5	9.4	8.9	8.5	7.7	6.1
16.0	-	-	-	8.2	7.6	7.6	7.3	6.8	5.8
18.0	-	-	-	6.8	6.7	6.2	5.9	5.6	5.5
20.0	-	-	-	5.7	5.6	5.4	4.8	4.9	4.7
22.0	-	-	-	-	4.7	4.6	4.2	4.4	3.9
24.0	-	-	-	-	4.0	3.9	3.9	3.6	3.1
26.0	-	-	-	-	-	3.3	3.5	3.0	2.5
28.0	-	-	-	-	-	3.1	2.9	2.5	2.0
30.0	-	-	-	-	-	2.8	2.5	2.1	1.6
32.0	-	-	-	-	-	-	2.1	1.7	1.2
34.0	-	-	-	-	-	-	1.8	1.4	0.9
36.0	-	-	-	-	-	-	1.5	1.1	0.6
38.0	-	-	-	-	-	-	-	0.8	-
40.0	-	-	-	-	-	-	-	0.6	-

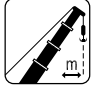
!* Over rear / En arrière / Nach hinten / Over achterzijde.

!** Over rear and hoist rope reeving 1X13



Ha



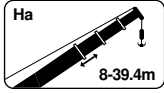
	8.0 m	13.4 m	18.5 m	23.6 m	28.9 m	34.1 m	39.4 m	44.9 m	50.4 m
									
m	t	t	t	t	t	t	t	t	t
3.0	49.6	48.7	47.1	-	-	-	-	-	-
3.5	44.8	43.8	43.9	-	-	-	-	-	-
4.0	40.7	39.9	38.4	31.7	-	-	-	-	-
4.5	37.1	37.4	32.4	29.6	-	-	-	-	-
5.0	-	32.2	27.9	25.9	23.5	-	-	-	-
6.0	-	23.0	23.6	20.9	18.9	-	-	-	-
7.0	-	17.3	18.6	18.4	17.0	13.7	-	-	-
8.0	-	13.6	14.8	14.7	14.4	12.7	-	-	-
9.0	-	11.1	12.2	12.8	12.1	11.6	10.5	-	-
10.0	-	9.2	10.2	10.8	10.3	10.2	9.2	-	-
12.0	-	-	7.5	8.0	8.0	7.9	7.1	6.9	-
14.0	-	-	5.8	6.3	6.2	6.1	5.9	5.9	4.9
16.0	-	-	-	5.0	4.9	5.1	5.0	4.7	3.9
18.0	-	-	-	4.1	4.0	4.3	4.1	3.7	3.1
20.0	-	-	-	3.4	3.3	3.6	3.4	3.0	2.5
22.0	-	-	-	-	2.7	3.0	2.8	2.5	1.9
24.0	-	-	-	-	2.3	2.5	2.3	2.0	1.5
26.0	-	-	-	-	-	2.2	1.9	1.6	1.1
28.0	-	-	-	-	-	1.8	1.6	1.2	0.7
30.0	-	-	-	-	-	1.6	1.3	0.9	-
32.0	-	-	-	-	-	-	1.0	0.6	-
34.0	-	-	-	-	-	-	0.8	-	-

TEREX AC 60

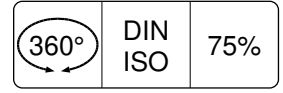
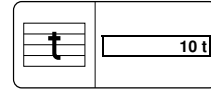
60 TON

Lifting capacities
Capacités

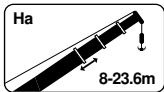
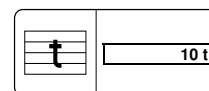
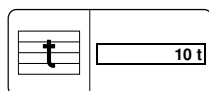
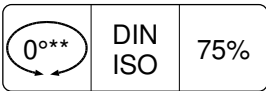
Tragfähigkeiten
Capacités



Ha

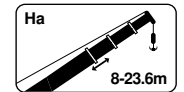


	8.0 m	13.4 m	18.5 m	23.6 m	28.9 m	34.1 m	39.4 m
m	t	t	t	t	t	t	t
3.0	41.6	-	-	-	-	-	-
3.5	33.1	-	-	-	-	-	-
4.0	25.6	26.3	-	-	-	-	-
4.5	20.7	21.4	-	-	-	-	-
5.0	-	17.8	19.2	-	-	-	-
6.0	-	13.1	14.3	14.8	13.3	-	-
7.0	-	10.1	11.2	11.8	11.2	10.3	-
8.0	-	8.0	9.0	9.6	9.5	8.8	-
9.0	-	6.5	7.5	8.0	7.9	7.9	7.4
10.0	-	5.4	6.3	6.8	6.7	7.1	6.5
12.0	-	-	4.6	5.0	5.0	5.3	5.1
14.0	-	-	3.4	3.9	3.8	4.1	3.9
16.0	-	-	-	3.0	2.9	3.3	3.0
18.0	-	-	-	2.4	2.3	2.6	2.4
20.0	-	-	-	1.9	1.8	2.1	1.9
22.0	-	-	-	-	1.4	1.7	1.5
24.0	-	-	-	-	1.0	1.4	1.1
26.0	-	-	-	-	-	1.0	0.7
28.0	-	-	-	-	-	0.8	-



Ha

Ha



	8.0 m	13.4 m	18.5 m	23.6 m
m	t	t	t	t
3.0	-	-	-	-
3.5	-	-	-	-
4.0	17.6	-	-	-
4.5	15.7	16.3	-	-
5.0	-	14.8	-	-
6.0	-	12.3	13.2	-
7.0	-	10.3	11.1	11.7
8.0	-	8.8	9.7	10.2
9.0	-	7.5	8.4	8.9
10.0	-	6.4	7.3	7.8
12.0	-	-	5.8	6.3
14.0	-	-	4.6	5.0
16.0	-	-	-	4.2
18.0	-	-	-	3.4
20.0	-	-	-	2.8

	8.0 m	13.4 m	18.5 m	23.6 m
m	t	t	t	t
3.0	11.2	11.7	12.5	-
3.5	10.0	10.4	11.1	-
4.0	8.9	9.3	10.1	10.5
4.5	7.8	8.3	9.1	9.6
5.0	-	7.5	8.3	8.7
6.0	-	6.2	7.0	7.4
7.0	-	5.0	5.9	6.4
8.0	-	4.1	5.0	5.4
9.0	-	3.4	4.2	4.6
10.0	-	2.8	3.5	4.0
12.0	-	-	2.7	3.0
14.0	-	-	1.9	2.4
16.0	-	-	-	1.7
18.0	-	-	-	1.2
20.0	-	-	-	0.9

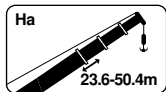
*180° Over front.
**0° Over rear.

TEREX AC 60

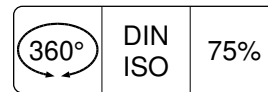
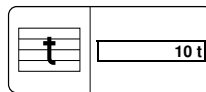
60 TON

Lifting capacities
Capacités

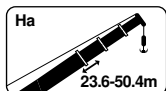
Tragfähigkeiten
Capacités



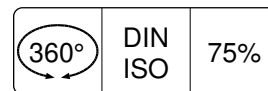
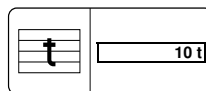
Ha Offset 25°



	23.6 m	28.9 m	34.1 m	39.4 m	44.9 m	50.4 m
m	t	t	t	t	t	t
5.0	4.7	-	-	-	-	-
6.0	4.4	-	-	-	-	-
7.0	4.2	4.4	-	-	-	-
8.0	4.0	4.2	-	-	-	-
9.0	3.8	4.0	4.2	-	-	-
10.0	3.6	3.9	4.0	4.0	-	-
12.0	3.3	3.6	3.8	3.8	3.9	-
14.0	3.2	3.4	3.7	3.6	3.8	3.7
16.0	3.1	3.3	3.5	3.4	3.6	3.6
18.0	3.0	3.1	3.4	3.3	3.4	3.5
20.0	-	3.0	3.2	3.2	3.2	3.3
22.0	-	3.0	3.1	3.1	3.0	3.1
24.0	-	3.0	3.0	3.0	2.8	3.0
26.0	-	-	2.7	2.9	2.5	2.5
28.0	-	-	2.5	2.8	2.3	1.9
30.0	-	-	-	2.3	1.9	1.5
32.0	-	-	-	1.9	1.5	1.1
34.0	-	-	-	-	1.2	0.7
36.0	-	-	-	-	0.9	-



Ha Offset 25°



	23.6 m	28.9 m	34.1 m	39.4 m	44.9 m	50.4 m
m	t	t	t	t	t	t
5.0	4.7	-	-	-	-	-
6.0	4.4	-	-	-	-	-
7.0	4.2	4.4	-	-	-	-
8.0	4.0	4.2	-	-	-	-
9.0	3.8	4.0	4.2	-	-	-
10.0	3.6	3.9	4.0	4.0	-	-
12.0	3.3	3.6	3.8	3.8	3.9	-
14.0	3.2	3.4	3.7	3.6	3.8	3.7
16.0	3.1	3.3	3.5	3.4	3.6	3.6
18.0	3.0	3.1	3.4	3.3	3.4	3.2
20.0	-	3.0	3.2	3.2	3.0	2.5
22.0	-	2.7	3.0	2.7	2.4	1.9
24.0	-	2.2	2.5	2.2	1.9	1.4
26.0	-	-	2.1	1.8	1.5	0.9
28.0	-	-	1.7	1.5	1.1	-
30.0	-	-	-	1.1	0.8	-
32.0	-	-	-	0.8	-	-

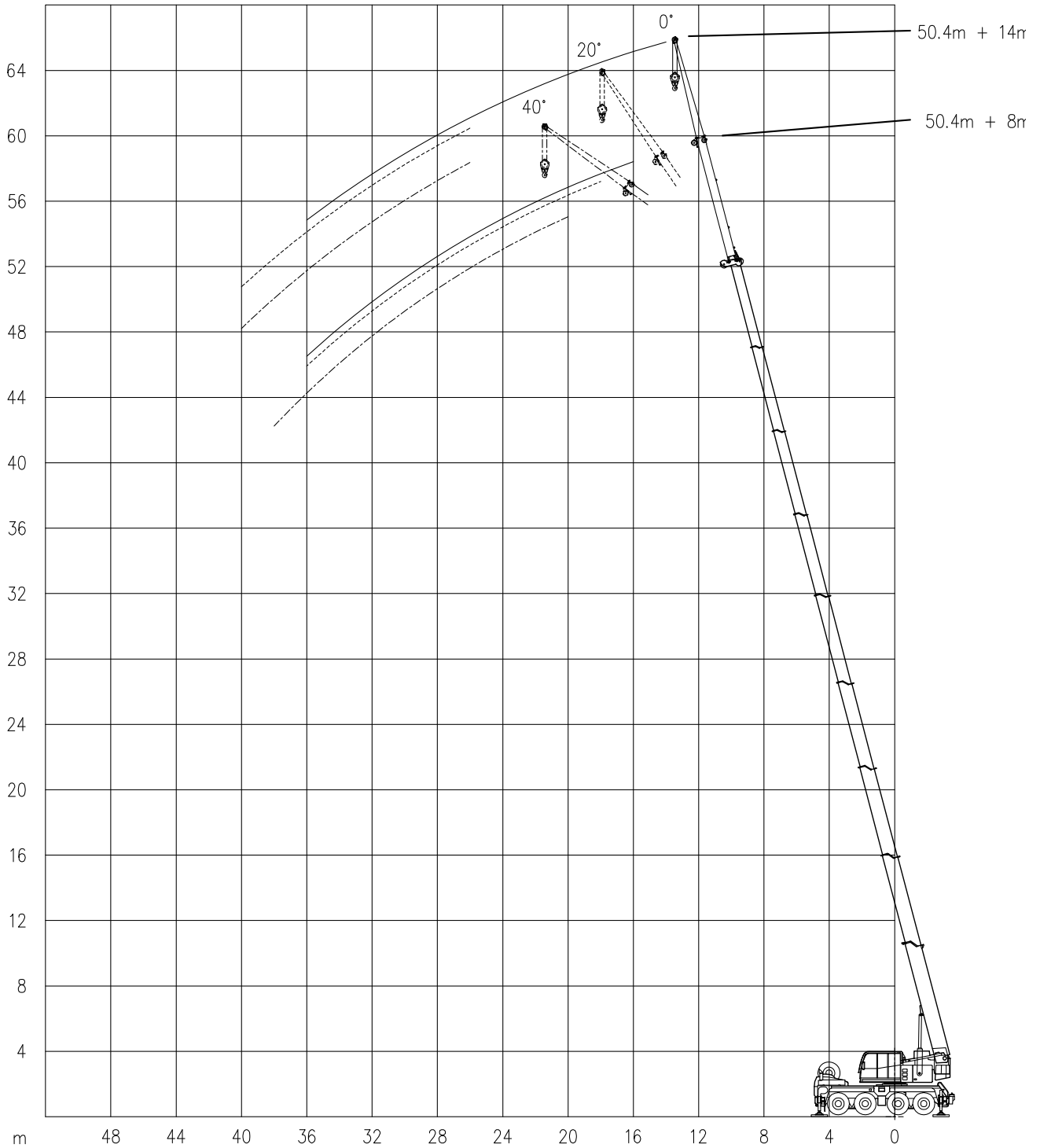
TEREX AC 60

60 TON

Working ranges
Portées

Arbeitsbereiche
Werkbereich

HaV

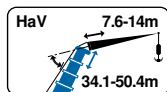


TEREX AC 60

60 TON

Lifting capacities
Capacités

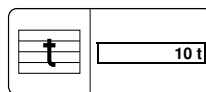
Tragfähigkeiten
Capaciteiten



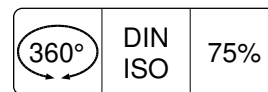
HaV



6.55m



10 t



360°

DIN
ISO

75%

m	34.1 m						39.4 m					
	7.6 m			14.0 m			7.6 m			14.0 m		
	0°	20°	40°	0°	20°	40°	0°	20°	40°	0°	20°	40°
t	t	t	t	t	t	t	t	t	t	t	t	t
10.0	9.1	-	-	-	-	-	-	-	-	-	-	-
12.0	8.3	6.1	-	4.8	-	-	7.3	-	-	-	-	-
14.0	7.5	5.8	4.8	4.5	-	-	6.5	5.4	-	4.2	-	-
16.0	6.7	5.5	4.6	4.2	3.0	-	5.7	5.3	4.3	4.0	-	-
18.0	5.4	5.2	4.5	3.9	2.9	2.3	4.9	5.1	4.2	3.8	2.9	-
20.0	4.4	4.8	4.5	3.7	2.8	2.2	4.3	4.7	4.1	3.6	2.8	-
22.0	3.8	3.9	4.1	3.5	2.6	2.2	3.9	3.8	3.9	3.4	2.6	2.2
24.0	3.5	3.1	3.3	3.1	2.5	2.1	3.4	3.4	3.3	3.0	2.5	2.2
26.0	3.1	3.0	2.9	2.5	2.4	2.1	2.7	3.0	3.1	2.5	2.4	2.1
28.0	2.7	2.7	2.8	2.3	2.3	2.0	2.3	2.5	2.6	2.4	2.4	2.1
30.0	2.4	2.5	2.5	2.1	2.0	2.0	2.1	2.2	2.1	2.0	2.0	2.1
32.0	2.0	2.2	-	2.0	1.8	1.8	2.0	2.0	2.0	1.6	1.9	1.9
34.0	1.7	1.8	-	1.8	1.7	1.7	1.7	1.8	1.8	1.5	1.6	1.8
36.0	1.4	1.5	-	1.6	1.6	1.6	1.4	1.5	-	1.3	1.4	1.5
38.0	1.2	-	-	1.4	1.5	0.6	1.2	1.3	-	1.2	1.2	1.3
40.0	-	-	-	1.1	1.3	-	1.0	-	-	1.1	1.1	1.3
42.0	-	-	-	0.9	1.0	-	-	-	-	0.9	1.0	-
44.0	-	-	-	0.8	0.8	-	-	-	-	0.7	0.8	-
46.0	-	-	-	-	-	-	-	-	-	0.5	0.6	-

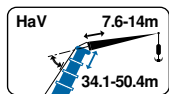
m	44.9 m						50.4 m					
	7.6 m			14.0 m			7.6 m			14.0 m		
	0°	20°	40°	0°	20°	40°	0°	20°	40°	0°	20°	40°
t	t	t	t	t	t	t	t	t	t	t	t	t
14.0	5.1	-	-	-	-	-	-	-	-	-	-	-
16.0	4.8	4.3	-	-	-	-	3.7	-	-	-	-	-
18.0	4.5	4.0	3.7	3.1	-	-	3.5	3.0	-	2.6	-	-
20.0	4.2	3.7	3.5	2.9	2.7	-	3.3	2.9	2.9	2.5	-	-
22.0	3.7	3.4	3.3	2.8	2.5	-	3.1	2.9	2.8	2.4	2.2	-
24.0	3.0	3.3	3.2	2.7	2.4	2.1	3.0	2.8	2.7	2.3	2.1	-
26.0	2.7	2.7	2.9	2.5	2.3	2.0	2.5	2.8	2.6	2.2	2.0	1.9
28.0	2.5	2.4	2.4	2.1	2.2	1.9	2.0	2.3	2.5	2.0	1.8	1.8
30.0	2.0	2.2	2.3	1.8	2.1	1.9	1.5	1.8	2.0	1.7	1.7	1.7
32.0	1.7	1.8	2.0	1.7	1.7	1.8	1.2	1.4	1.6	1.3	1.6	1.6
34.0	1.3	1.5	1.6	1.5	1.6	1.6	0.8	1.0	1.2	1.0	1.4	1.6
36.0	1.0	1.2	1.3	1.2	1.5	1.5	0.5	0.7	0.8	0.7	1.1	1.3
38.0	0.8	0.9	1.0	0.9	1.2	1.4	-	-	0.6	-	0.8	1.0
40.0	0.5	0.7	-	0.7	0.9	1.1	-	-	-	-	0.5	0.7
42.0	-	-	-	-	0.7	0.8	-	-	-	-	-	-

TEREX AC 60

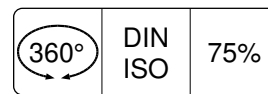
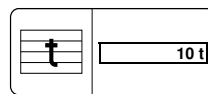
60 TON

Lifting capacities
Capacités

Tragfähigkeiten
Capaciteiten

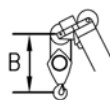


HaV



m	34.1 m						39.4 m					
	7.6 m			14.0 m			7.6 m			14.0 m		
	0°	20°	40°	0°	20°	40°	0°	20°	40°	0°	20°	40°
t	t	t	t	t	t	t	t	t	t	t	t	
10.0	8.3	-	-	-	-	-	-	-	-	-	-	-
12.0	6.4	6.1	-	4.8	-	-	5.9	-	-	-	-	-
14.0	5.2	5.6	4.8	4.5	-	-	5.4	5.2	-	4.2	-	-
16.0	4.7	4.4	4.6	4.0	3.0	-	4.4	4.4	4.3	3.6	-	-
18.0	4.1	3.9	3.8	3.3	2.9	2.3	3.7	3.9	3.8	3.2	2.9	-
20.0	3.3	3.6	3.5	3.1	2.8	2.2	3.3	3.2	3.4	2.9	2.8	-
22.0	2.8	3.0	3.1	2.7	2.6	2.2	2.8	3.0	2.8	2.4	2.5	2.2
24.0	2.6	2.6	2.6	2.4	2.3	2.1	2.3	2.5	2.6	2.2	2.4	2.2
26.0	2.2	2.3	2.4	2.0	2.1	2.0	1.9	2.1	2.2	2.0	1.9	2.1
28.0	1.8	2.0	2.0	1.8	2.0	2.0	1.6	1.7	1.8	1.7	1.8	1.8
30.0	1.5	1.6	1.7	1.6	1.6	1.8	1.3	1.4	1.5	1.4	1.7	1.7
32.0	1.3	1.4	-	1.4	1.5	1.5	1.0	1.1	1.2	1.1	1.4	1.5
34.0	1.1	1.1	-	1.2	1.4	1.4	0.7	0.8	0.9	0.8	1.1	1.3
36.0	0.8	0.9	-	1.0	1.1	1.2	-	0.6	-	0.6	0.9	1.0
38.0	0.6	-	-	0.8	0.9	-	-	-	-	-	0.6	0.7
40.0	-	-	-	0.6	0.7	-	-	-	-	-	-	0.5
42.0	-	-	-	-	-	-	-	-	-	-	-	-

m	44.9 m						50.4 m					
	7.6 m			14.0 m			7.6 m			14.0 m		
	0°	20°	40°	0°	20°	40°	0°	20°	40°	0°	20°	40°
t	t	t	t	t	t	t	t	t	t	t	t	
14.0	4.7	-	-	-	-	-	-	-	-	-	-	-
16.0	3.8	4.2	-	-	-	-	3.6	-	-	-	-	-
18.0	3.6	3.4	3.7	2.9	-	-	2.8	3.0	-	2.6	-	-
20.0	2.9	3.2	3.2	2.5	2.7	-	2.2	2.6	2.9	2.2	-	-
22.0	2.4	2.7	2.9	2.4	2.4	-	1.7	2.0	2.3	1.7	2.2	-
24.0	1.9	2.2	2.4	1.9	2.1	2.1	1.2	1.5	1.8	1.3	1.9	-
26.0	1.5	1.7	1.9	1.5	1.9	1.9	0.8	1.1	1.3	0.9	1.4	1.9
28.0	1.1	1.4	1.5	1.2	1.6	1.8	0.5	0.8	1.0	0.6	1.1	1.5
30.0	0.8	1.0	1.2	0.9	1.3	1.6	-	-	0.6	-	0.7	1.1
32.0	0.5	0.7	0.8	0.6	1.0	1.3	-	-	-	-	-	0.8
34.0	-	-	0.6	-	0.7	1.0	-	-	-	-	-	-
36.0	-	-	-	-	-	0.7	-	-	-	-	-	-
38.0	-	-	-	-	-	-	-	-	-	-	-	-



Hook block/Crane hook

Unterflasche/Hakengehänge

Capacity Capacité Tragfähigkeit Capaciteit	Number of sheaves Nombre de poulies Anzahl der rollen Aantal schijven	Number of lines Nombre de brins Strangzahl Aantal parten	Weight Poids Gewicht Gewicht	"B"
SWL 57.9 t	5	11	650 kg	2.0 m
SWL 37.6 t	3	7	550 kg	1.3 m
SWL 16.4 t	1	3	350 kg	1.1 m
SWL 5.5 t	-	1	170 kg	0.8 m